

# Auto Grow Light Tree

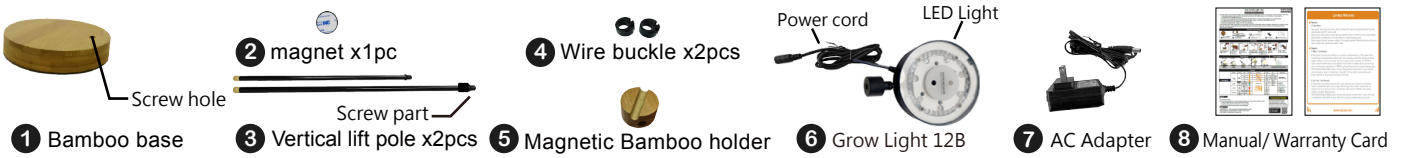
## Quick Manual Guide

Auto Grow Light Tree is an innovation designed both as a grow light and a reading light for study rooms, bedrooms, or any other places of your choice.

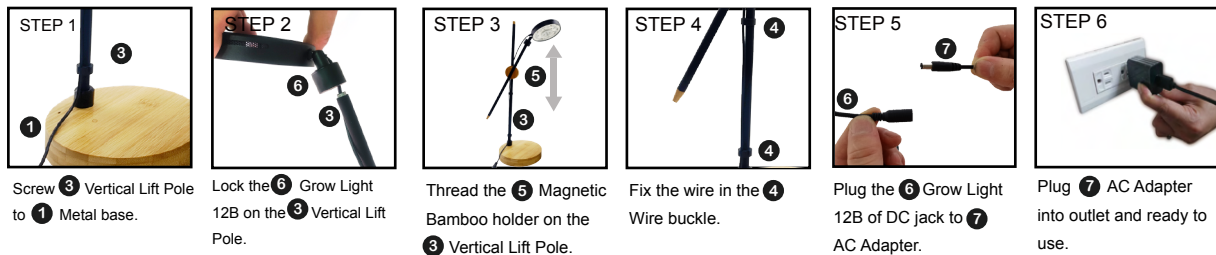
1. Outstretching magnetic holders and a slim rubber-metal tube, presented with additive lamps on any horizontal and vertical positions on the tube to form an elegant tree.
2. 3 Preset modes regarding different plants (switchable through MODE button): L (Leafy), S (Succulent/Aquarium) and G (Mini plants).
3. A full spectrum grow light with 2 parts of dimmable light (switchable through COLOR button): Blue White/UV and Red.
4. Dimmable function (long press MODE/COLOR button to activate).
5. A lamp that is capable of 360° rotation and +/-90° tilt at any direction.

Such advanced function helps to easily setup an indoor garden of any kind, including flowers, leafy, microgreens, mosses, ferns, succulents, and even aquariums. Decorate your space with plants and heartwarming light that brings you energy and joy, which serves as a phototherapy treatment that soothes your depression.

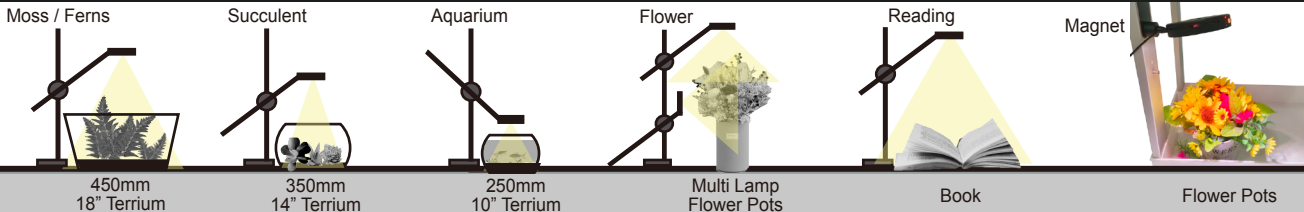
### Standard Accessories



### Assembly



### Applications



### Control

Button	Press	Step	Indicator	LED Level	Sound	LED	Description
TIMER #1	One Press	On	●	● ○ ○ ○ ○	BB	Light On	Timmer setting just for light control.
		High	●	○ ● ○ ○ ○	BBB	16 hrs On / Daily	
		Low	●	○ ○ ● ○ ○	BBBB	9 hrs On / Daily	
		Off	●	○ ○ ○ ○ ●	B 1Sec.	Light Off	
MODE	One Press	L (Leafy)	●	Dimmer Level L0 ON OFF L1 ON OFF L2 ON OFF L3 ON OFF L4 ON OFF HIGH LOW HIGH LOW HIGH LOW HIGH LOW HIGH LOW OFF OFF OFF OFF OFF OFF OFF OFF OFF OFF	B	High-L4	Long press: Dimmer for 5 Levels cycling L0 (B 1 sec) turn off L1 (B) Level 1 L2 (BB) Level 2 L3 (BBB) Level 3 L4 (BBBB) Level 4 and top Level
		G (Garden)	●		BB	Low-L2	
		S (Succulent)	●		BBB	High-L4	
COLOR	One Press	White	●		B		
		Red	●		BB		
		UV	●	B 1Sec.			
FAN		Turn on	●				
		Turn off	○				

#### Remark

- #1:
1. Double press to switch On/Off
  - 2: Set up the Wake-up (automatically turns on everyday) and Sleeping (automatically turns off everyday) modes through lighting time setting
    - A : Wake-up time setting: When light is on, press and hold for 5 seconds until it beeps
    - B : Sleeping time setting: When light is off, press and hold for 5 seconds until it beeps
  - 3 : One short + One long pressing the Timer button resets the product to default settings.

#### Mode

G Mode: Red:White+UV=1:1 great for microgreen, Herb, microgreen, Herb, Moss Ferns growing  
 S Mode: Red:White+UV=1:5 strong Blue white and UV is great for Succulents, Aquarium  
 L Mode: Red:White=5:1 Strong Red, good for flowering, and leafy

#### Planting Environment Notification

This product is designed for indoor gardening. Without built-in temperature control, our product works best within a temperature range of 18°C~30°C, specifically, 25°C. Except for special plants that naturally grow in higher or lower temperatures, please adjust the air circulating fans once the indoor temperature exceeds the range to sustain the plants' growth.

Feel free to visit the OPCOM website for more details!

